



TRANSPORTATION CABINET

Frankfort, Kentucky 40622
www.transportation.ky.gov/

Steven L. Beshear
Governor

Michael W. Hancock, P.E.
Secretary

August 13, 2013

CALL NO. 430
CONTRACT ID NO. 132657
ADDENDUM # 1

Subject: Boone-Gallatin Counties, 121GR13M104-FE02
Letting August 16, 2013

- (1) Added - Special Note - Page 35(a) of 97
- (2) Added - Drawing - Page 35(b) of 97
- (3) Revised - Material Summary - Page 39 of 97
- (4) Revised - Bid Items - Page 96-97 of 97

Proposal revisions are available at <http://transportation.ky.gov/Construction-Procurement/>.

If you have any questions, please contact us at 502-564-3500.

Sincerely,

A handwritten signature in blue ink that reads "Ryan Griffith".

Ryan Griffith
Acting Director
Division of Construction Procurement

RG:ks
Enclosures



An Equal Opportunity Employer M/F/D

SPECIAL NOTES FOR DECK DRAIN EXTENSION ON BRIDGES

I. DESCRIPTION. Perform all work in accordance with the Kentucky Transportation Cabinet, Department of Highway's 2012 Standard Specifications for Road and Bridge Construction and applicable Supplemental Specifications, the Standard Drawings, this note, and the attached detail drawings. Section references are to the Standard Specifications.

This work consists of: (1) Furnish all labor, materials, tools, and equipment; (2) Install Deck Drain Extensions as specified and in accordance with the attached detail drawing; and (3) Any other work specified as part of this contract.

II. MATERIALS

- A. Poly-methyl methacrylate (PMMA).** Use new, commercial grade, 1/4" thick Poly-methyl methacrylate known as acrylic glass or its various trade names, like Plexiglass®. The Engineer will base acceptance on visual inspection.
- B. Anchors.** Will allow galvanized all-tread 1/2"x6" or an approved alternative.

III. CONSTRUCTION

- A. Place New Deck Drain Extensions.** place New acrylic glass as shown in attached detail drawing.

IV. MEASUREMENT

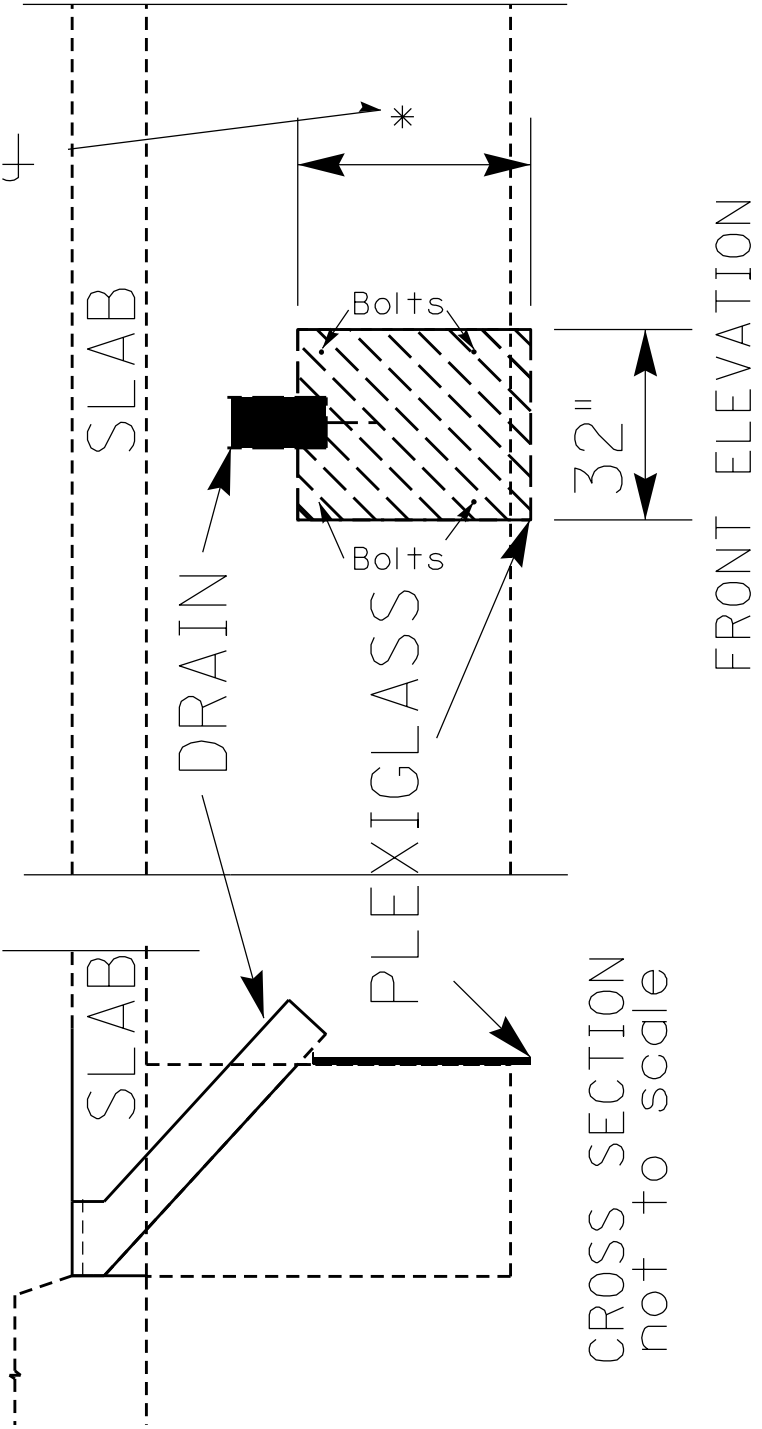
- A. Deck Drain Extensions.** The Department will measure this quantity as each.

V. PAYMENT

- A. Deck Drain Extensions.** Payment at the contract unit price per each is full compensation for furnishing and installing new acrylic glass panels, and all incidental items necessary to complete the work within the specified pay limits as specified by this note and as shown on the attached detail drawing.

field measure

DRAIN EXTENSIONS



CROSS SECTION
not to scale

FRONT ELEVATION

MATERIAL SUMMARY

CONTRACT ID: 132657

121GR13M104-FE02

MB00805361301

BOONE COUNTY KY 536. KY 0536 OVER GUNPOWDER CREEK (MP 4.35) BRIDGE DECK OVERLAY.

Project Line No	Bid Code	DESCRIPTION	Quantity	Unit
0010	02014	BARRICADE-TYPE III	4.00	EACH
0020	02562	TEMPORARY SIGNS	300.00	SQFT
0030	02650	MAINTAIN & CONTROL TRAFFIC - (APPLIES TO 008B00036N)	1.00	LS
0040	02653	LANE CLOSURE	2.00	EACH
0050	03298	EXPAN JOINT REPLACE 4 IN	56.00	LF
0060	03299	ARMORED EDGE FOR CONCRETE	56.00	LF
0070	03300	ELIMINATE TRANSVERSE JOINT	60.00	LF
0080	03304	BRIDGE OVERLAY APPROACH PAVEMENT	135.00	SQYD
0090	04934	TEMP SIGNAL MULTI PHASE	1.00	EACH
0100	06514	PAVE STRIPING-PERM PAINT-4 IN - ROAD	200.00	LF
0110	06550	PAVE STRIPING-TEMP REM TAPE-W - 4"	2,000.00	LF
0120	06554	PAVE STRIPING-DUR TY 1-4 IN W - BRIDGE DECK	410.00	LF
0130	06555	PAVE STRIPING-DUR TY 1-4 IN Y - BRIDGE DECK	410.00	LF
0140	08150	STEEL REINFORCEMENT	297.20	LB
0150	08504	EPOXY SAND SLURRY	138.00	SQYD
0160	08510	REM EPOXY BIT FOREIGN OVERLAY	548.00	SQYD
0170	08526	CONC CLASS M FULL DEPTH PATCH	4.00	CUYD
0180	08534	CONCRETE OVERLAY-LATEX	26.70	CUYD
0190	08549	BLAST CLEANING	685.00	SQYD
0200	24094EC	PARTIAL DEPTH PATCHING	12.00	CUYD
0210	02569	DEMOBILIZATION	1.00	LS

PROPOSAL BID ITEMS

132657

Page 1 of 2

Report Date 8/13/13

Section: 0001 - BRIDGE

LINE	BID CODE	ALT	DESCRIPTION	QUANTITY	UNIT	UNIT PRICE	FP	AMOUNT
0010	01897		ASPHALT WEDGE CURBRPM-100-09 -- 25 EACH APPROACH EDGE	100.00	LF		\$	
0020	02014		BARRICADE-TYPE III	12.00	EACH		\$	
0030	02562		TEMPORARY SIGNS	700.00	SQFT		\$	
0040	02650		MAINTAIN & CONTROL TRAFFIC(APPLIES TO 008B00036N)	1.00	LS		\$	
0050	02650		MAINTAIN & CONTROL TRAFFIC(APPLIES TO 039B00010N)	1.00	LS		\$	
0060	02650		MAINTAIN & CONTROL TRAFFIC(APPLIES TO 008B00021N)	1.00	LS		\$	
0070	02653		LANE CLOSURE	6.00	EACH		\$	
0080	03295		EXPAN JOINT REPLACE 2 IN	70.00	LF		\$	
0090	03298		EXPAN JOINT REPLACE 4 IN	112.00	LF		\$	
0100	03299		ARMORED EDGE FOR CONCRETE	172.00	LF		\$	
0110	03300		ELIMINATE TRANSVERSE JOINT	165.00	LF		\$	
0120	03304		BRIDGE OVERLAY APPROACH PAVEMENT	372.00	SQYD		\$	
0130	03304		BRIDGE OVERLAY APPROACH PAVEMENT25' EACH END GUARD RAIL TO GUARD RAIL	194.00	SQYD		\$	
0140	04934		TEMP SIGNAL MULTI PHASE	3.00	EACH		\$	
0150	06514		PAVE STRIPING-PERM PAINT-4 INROAD	760.00	LF		\$	
0160	06514		PAVE STRIPING-PERM PAINT-4 IN	120.00	LF		\$	
0170	06549		PAVE STRIPING-TEMP REM TAPE-B6"	1,100.00	LF		\$	
0180	06550		PAVE STRIPING-TEMP REM TAPE-W 4"	7,000.00	LF		\$	
0190	06551		PAVE STRIPING-TEMP REM TAPE-Y4"	335.00	LF		\$	
0200	06554		PAVE STRIPING-DUR TY 1-4 IN WBRIDGE DECK	1,046.00	LF		\$	
0210	06554		PAVE STRIPING-DUR TY 1-4 IN WBRIDGE DECK	820.00	LF		\$	
0220	06555		PAVE STRIPING-DUR TY 1-4 IN YBRIDGE DECK	1,046.00	LF		\$	
0230	06555		PAVE STRIPING-DUR TY 1-4 IN Y	820.00	LF		\$	
0240	06562		PAVE MARKING-THERMO R 6 FT	2.00	EACH		\$	
0250	06563		PAVE MARKING-R/R XBUCKS 16 IN	42.00	LF		\$	
0260	06568		PAVE MARKING-THERMO STOP BAR-24INSTOP BAR	36.00	LF		\$	
0270	08150		STEEL REINFORCEMENT	2,144.88	LB		\$	
0280	08504		EPOXY SAND SLURRY	890.00	SQYD		\$	
0290	08510		REM EPOXY BIT FOREIGN OVERLAY	1,608.00	SQYD		\$	
0300	08526		CONC CLASS M FULL DEPTH PATCH	17.00	CUYD		\$	
0310	08534		CONCRETE OVERLAY-LATEX	121.70	CUYD		\$	
0320	08549		BLAST CLEANING	3,740.00	SQYD		\$	
0330	08551		MACHINE PREP OF SLAB	1,244.00	SQYD		\$	
0340	20600NC		DECK DRAIN EXTENSION	18.00	EACH		\$	
0350	24094EC		PARTIAL DEPTH PATCHING	12.00	CUYD		\$	
0360	24094EC		PARTIAL DEPTH PATCHING	32.00	CUYD		\$	
0370	24094EC		PARTIAL DEPTH PATCHING	25.00	CUYD		\$	

Section: 0002 - DEMOBILIZATION

PROPOSAL BID ITEMS

132657

Page 2 of 2

Report Date 8/13/13

LINE	BID CODE	ALT	DESCRIPTION	QUANTITY	UNIT	UNIT PRICE	FP	AMOUNT
0380	02569		DEMOBILIZATION	1.00	LS		\$	